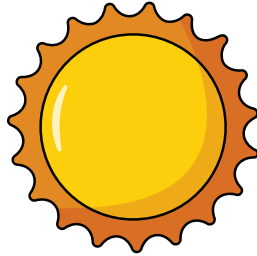
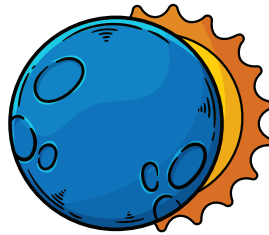


Sunlight



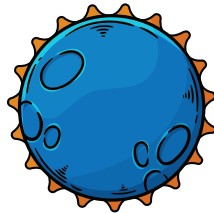
In the daytime, the Sun's light shines all over the Earth. It's like your flashlight lighting up everything around.

New Moon



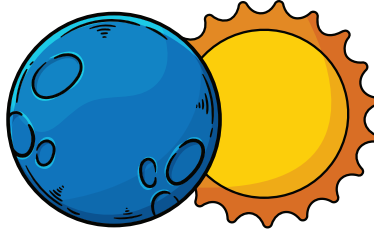
Sometimes, the Moon moves in between the Earth and the Sun. This happens when the Moon is in its "new moon" phase. It's like the small ball (Moon) comes right between the big ball (Earth) and the flashlight (Sun).

Total Solar Eclipse



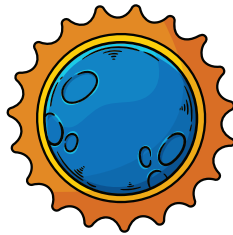
When the Moon lines up just right, it can block the Sun's light completely, making it dark for a little while on Earth. It's like the small ball (Moon) is playing hide-and-seek with the big ball (Sun), and for some places on Earth, everything goes dark for a short time. This is called a total solar eclipse.

Partial Solar Eclipse



Sometimes, the Moon doesn't cover the Sun completely. It's like taking a little bite out of a cookie. This is called a partial solar eclipse, and it makes the Sun look like a crescent or a bite has been taken out of it.

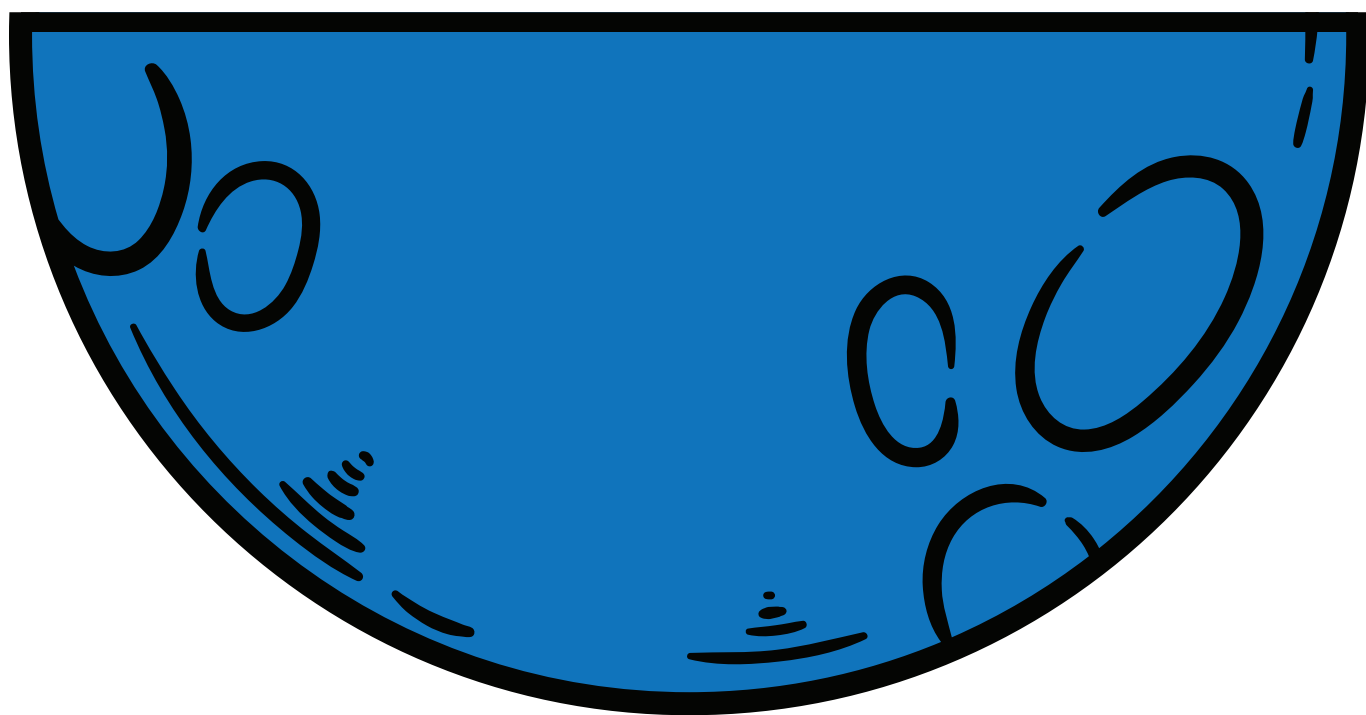
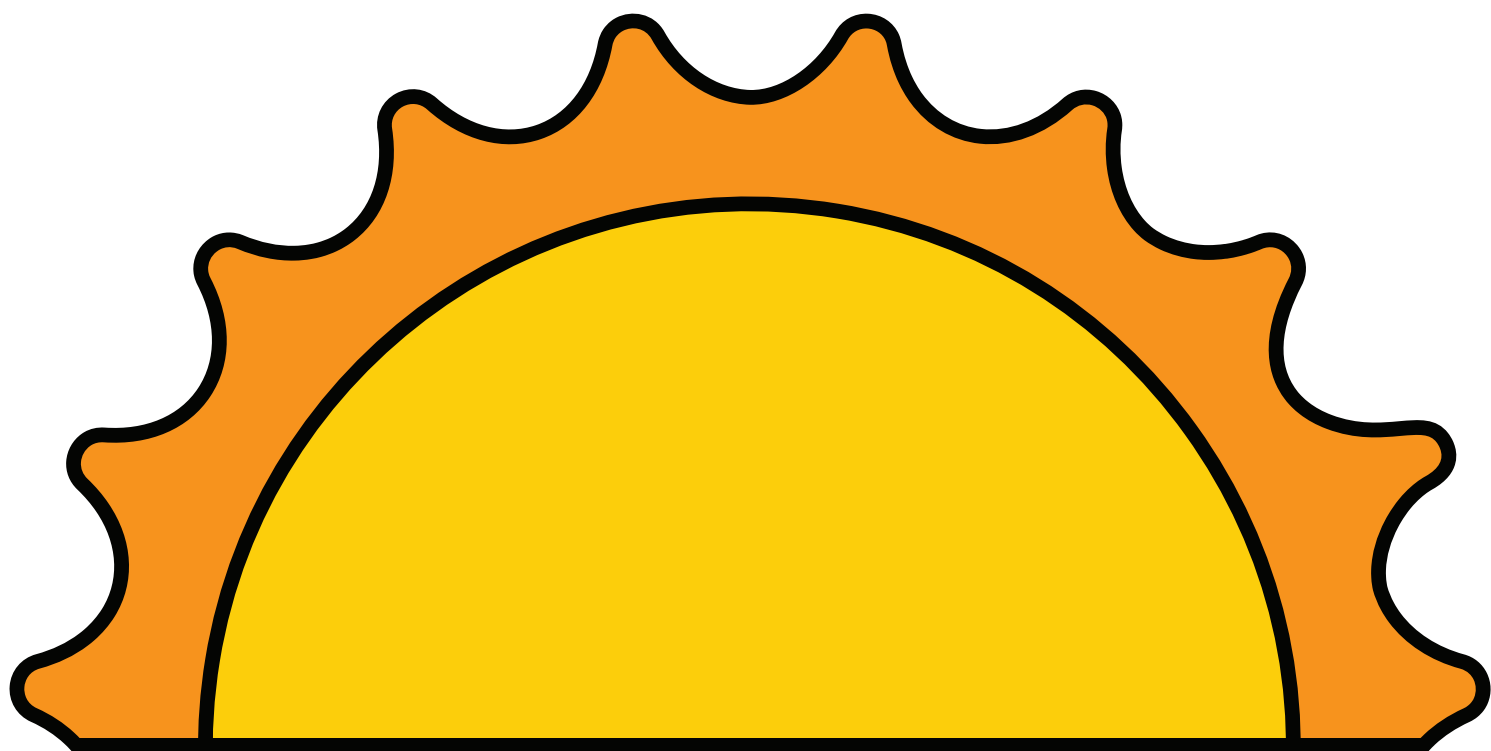
Annular Eclipse



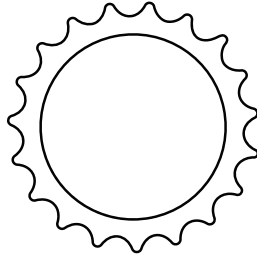
If the Moon is a bit far from Earth, it doesn't cover the Sun entirely. Instead, you see a ring of sunlight around the Moon, creating a "ring of fire." This is called an annular solar eclipse.

Reminder

Remember, it's super important not to look directly at the Sun, even during an eclipse, because it can hurt your eyes. Just like you need sunglasses to protect your eyes from the Sun on a regular day, you need special glasses or other safe methods to watch a solar eclipse.

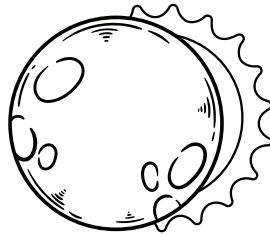


Sunlight



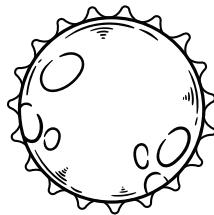
In the daytime, the Sun's light shines all over the Earth. It's like your flashlight lighting up everything around.

New Moon



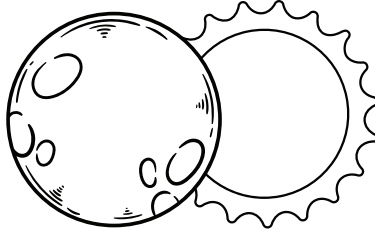
Sometimes, the Moon moves in between the Earth and the Sun. This happens when the Moon is in its "new moon" phase. It's like the small ball (Moon) comes right between the big ball (Earth) and the flashlight (Sun).

Total Solar Eclipse



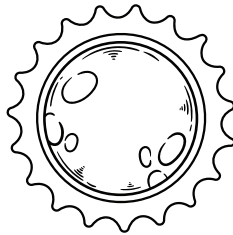
When the Moon lines up just right, it can block the Sun's light completely, making it dark for a little while on Earth. It's like the small ball (Moon) is playing hide-and-seek with the big ball (Sun), and for some places on Earth, everything goes dark for a short time. This is called a total solar eclipse.

Partial Solar Eclipse



Sometimes, the Moon doesn't cover the Sun completely. It's like taking a little bite out of a cookie. This is called a partial solar eclipse, and it makes the Sun look like a crescent or a bite has been taken out of it.

Annular Eclipse



If the Moon is a bit far from Earth, it doesn't cover the Sun entirely. Instead, you see a ring of sunlight around the Moon, creating a "ring of fire." This is called an annular solar eclipse.

Reminder

Remember, it's super important not to look directly at the Sun, even during an eclipse, because it can hurt your eyes. Just like you need sunglasses to protect your eyes from the Sun on a regular day, you need special glasses or other safe methods to watch a solar eclipse.

